

LIST OF MAJOR PROPERTIES HELD BY THE GROUP

Name of property and location	Lot number	Group's interest	Site area (m ²)
Hong Kong			
1. 16th, 18th, 19th, 20th and 24th Floors, (including lavatories on 16th to 24th Floors and Flat Roof on 24th Floor), Far East Consortium Building, 121 Des Voeux Road Central	120/736 shares of and in IL 2198, 2200, 2201, Sec. A and RP of IL 2199 and Sec. A, B & C of ML 299	100%	—
2. Unit 1 on G/F and Unit 3 on Level 1 (known as Golden Palace Theatre) and Flats 1A, 1C Tung Wai Garden, 419G Queen's Road West and 4 Sai On Lane, Sai Ying Pun	5912/25701 shares of and in RP of Sec. B of ML 205	100%	—
3. Unit B on 1/F, Cheong Kat Mansion, 98-100 Catchick Street and 21-23 Cadogan Street, Kennedy Town	8/180 shares of and in RP of Ss1 of Sec. A & RP of Sec. A of Ss1 of Sec. A of IL 1298	100%	—
4. The entire basement to 6/F (except for the cinema) and Flat A on 24/F and Roof, Far East Bank Mongkok Building, 240-244 Portland Street and 11 Nelson Street, Mongkok	95/400 shares of and in RP of KIL 1385-1386	100%	—
5. Far East Consortium Building, 204-206 Nathan Road, Tsim Sha Tsui, Kowloon	RP of KIL 10467 & RP of KIL 10468	100%	—
6. Far East Bank Tsuen Wan Building, 135-143 Castle Peak Road, Tsuen Wan	Lot 2158 in DD 449	100%	—
7. G/F, Garden Area and 1/F of Block 4, and carparking spaces nos. 1, 4, 25, 61 & 62, Rise Park Villas, Razor Hill Road, Sai Kung	69/1408 shares of and in Lot 1124 in DD 253	100%	—

LIST OF MAJOR PROPERTIES HELD BY THE GROUP (continued)

Approximate gross floor area (m ²)	Type	Stage of completion	Expected completion date
2,473	O	Completed	Existing
658	C & R	Completed	Existing
91	C	Completed	Existing
4,782	S & R	Completed	Existing
3,579	S & O	Completed	Existing
9,076	S, R & C	Completed	Existing
293	R & CP	Completed	Existing

LIST OF MAJOR PROPERTIES HELD BY THE GROUP (continued)

Name of property and location	Lot number	Group's interest	Site area (m ²)
Hong Kong			
8. Various shops on LG/F and UG/F, Tsuen Wan Gardens Phase 1, 15-23 Castle Peak Road, Tsuen Wan	279/4400 shares of and in TWTL 241	100%	—
9. Various lots, Pak Kong, Sai Kung	Lots 1134 RP, 1137 RP, 1138 & 1139 RP in DD 222	100%	3,525
10. Shops 17, 18 and 20 on G/F, commercial portion of 1/F - 3/F, Tung Fai Court, 2 Shui Che Kwun Street, Yuen Long	249/750 shares of and in YLTL 287 & 349	100%	—
11. Route TWISK, Chuen Lung	Various lots in DD 360, DD 433 and DD 435	100%	32,202
12. Shop 6 on G/F and whole of 1/F, Cheong Hung Mansion, 2-14 Mei Fong Street, Kwai Chung	119/1000 shares of and in KCTL 186 & 295	100%	—
13. Shop C on Ground Floor and 1/F to 3/F, Full Hang Court, Nos. 104-112 Ma Tau Wai Road, Hung Hom	213/527 shares of and in KIL 8480-8484, RP of KIL 6020	100%	—
14. Shop No. 7 on G/F, whole 1/F and two staircases & one entrance lobby on G/F for the exclusive use of 1/F, Full Yau Court, Yau San Street, Yuen Long	285/975 shares of and in YITL 391	100%	—
15. Shop Nos. 10, 19-24, 44-46, 56-60 and Showcase Nos. 18, 18a, 18b on G/F, whole 1/F, Come On Building, 387 Castle Peak Road, Castle Peak Bay, Tuen Mun	363/2485th shares of and in TMTL 151	100%	—
16. Shop Nos. 4, 5 and 6 on G/F, Toho Court, 18 and 20 Main Street Apleichau and No. 5 Ping Lan Street, Apleichau	30/1176th shares of and in Section A of Apleichau Inland Lot 47 and the extension thereto	100%	—

LIST OF MAJOR PROPERTIES HELD BY THE GROUP (continued)

Approximate gross floor area (m ²)	Type	Stage of completion	Expected completion date
3,987	SA	Completed	Existing
Not yet determined	A	Planning stage	Vacant site
1,318	S, R & C	Completed	Existing
Not yet determined	A	Planning stage	Vacant site
570	S & C	Completed	Existing
1,667	C & S	Completed	Existing
1,232	C & S	Completed	Existing
1,452	C & S	Completed	Existing
57	S	Completed	Existing

LIST OF MAJOR PROPERTIES HELD BY THE GROUP (continued)

Name of property and location	Lot number	Group's interest	Site area (m ²)
Hong Kong			
17. Yau Kam Tau, Tsuen Wan	Lot 232 RP in DD 354	100%	5,940
18. Sheung Yeung, Sai Kung	Lots 84, 85, 86, 89, 91, 92, 94, 95A, 99, 116RP, 137, 139, 141RP, 213, 221RP, 224RP, 229, 230, 231A, 231RP, 233, 234, 236, 258, 263RP and 746 in DD225	100%	7,136
19. Tai Hang Village, Tai Po	Lot 73 RP in DD7	100%	2,332
20. 60-66 Baker Street & 2-6 Baker Court, Hung Hom, Kowloon	HHIL 235 SB, SC, SD, SE, SIss1, SIss2 and SIss3	100%	604
21. Pak Shek Wo, Sai Kung, N.T.	Lot 1265 in DD 253	100%	2,796
22. Tan Kwai Tsuen, Yuen Long, N.T.	Lot 3927 SB in DD 124	100%	4,849
23. 46-48 Anchor Street, Tai Kok Tsui, Kowloon	KIL 6374	100%	357

LIST OF MAJOR PROPERTIES HELD BY THE GROUP (continued)

Approximate gross floor area (m ²)	Type	Stage of completion	Expected completion date
–	A	Planning stage	Vacant site
4,682	R	Under construction	2001
3,121	R	Planning stage	Vacant site
5,444	S & R	Under Construction	2002
1,672	R	Under Construction	2001
4,849	R	Planning Stage	2002
4,281	H	Planning Stage	2003

LIST OF MAJOR PROPERTIES HELD BY THE GROUP (continued)

Name of property and location	Lot number	Group's interest	Site area (m ²)
Overseas			
24. Section 67, Town of Kuala Lumpur, Wilayah Persekutuan	Lots 471 and 472	100%	1,860
25. Section 67, Town of Kuala Lumpur, Wilayah Persekutuan	Lot 908	100%	985
26. Mukim of Kajang, District of Hulu Langat, State of Selangor	Lot 6504	51%	203,403
27. State Land Plot 'E' Teluk Gedong Forest Reserve, Mukim and District of Kelang, State of Selangor	–	100%	185,874
28. 100A Eu Tong Sen Street, Waldorf Office Complex, Singapore	Lot 178-49-A/J of TS 22	100%	–
29. Cambridge Building, 10024 Jasper Avenue, Edmonton, Alberta, Canada	Lots 14 and 15	100%	1,394
30. Kelly Ramsey Building, 100A Street, #101A Avenue, Edmonton, Alberta, Canada	Lots 39 and 40, except thereout the most westernly 6 feet throughout of the said Lot 40	100%	1,310
31. Dallas Grand Hotel, 1914 Commerce Street, Dallas, Texas, U.S.A.	N/A	100%	6,849
32. 360 St. Kilda Road, Melbourne, Victoria, Australia	N/A	100%	4,088
33. 370 St. Kilda Road, Melbourne, Victoria, Australia	N/A	100%	3,729

LIST OF MAJOR PROPERTIES HELD BY THE GROUP (continued)

Approximate gross floor area (m ²)	Type	Stage of completion	Expected completion date
23,532	H	Completed	Existing
–	R	Completed	Existing
–	R	Under construction	2000-2001
–	R	Under construction	2000
3,464	O & S	Completed	Existing
13,806	C	Completed	Existing
4,307	O	Completed	Existing
–	H	Completed	Existing
15,681	O & CP	Development Stage	2001
38,000	R & CP	Completed	Existing

LIST OF MAJOR PROPERTIES HELD BY THE GROUP (continued)

Name of property and location	Lot number	Group's interest	Site area (m ²)
Overseas			
34. The Dolphin Acrade, Gold Coast Highway and Orchid Avenue, Surfers Paradise, Gold Coast Queensland, Australia	N/A	80%	7,240
35. 1954 Commerce Street, Dallas, Texas, USA	N/A	100%	2,322
36. Room 2603, Block 3, Dong-Jun Plaza, 836 Dong Feng Road East, Guangzhou, PRC	N/A	100%	—
37. Room 2604, Block 3, Dong-Jun Plaza, 836 Dong Feng Road East, Guangzhou, PRC	N/A	100%	—

LIST OF MAJOR PROPERTIES HELD BY THE GROUP (continued)

Approximate gross floor area (m ²)	Type	Stage of completion	Expected completion date
7,223	C & CP	Completed	Existing
11,918	CP & SA	Development stage	2001
91	O	Completed	Existing
91	C	Completed	Existing

All the above properties except items number 24 to 28 were held under long-term lease by the Group

O – Office
SA – Shopping Arcade
C – Commercial

S – Shops
R – Residential
A – Agricultural

H – Hotel
CP – Car Park
I – Industrial

Principal Properties in Hong Kong

香港之主要物業



Composite Development at Baker Street,
Hunghom
綜合發展大廈於紅磡必嘉街



Low-density Houses Development at Pak Shek Wo,
Sai Kung
低密度住宅發展於西貢白石窩



Low-density Residential Development
at Tan Kwai Tsuen, Yuen Long
低密度住宅發展於元朗丹桂村



Hong Kong 26 Court

Principal Investment in China

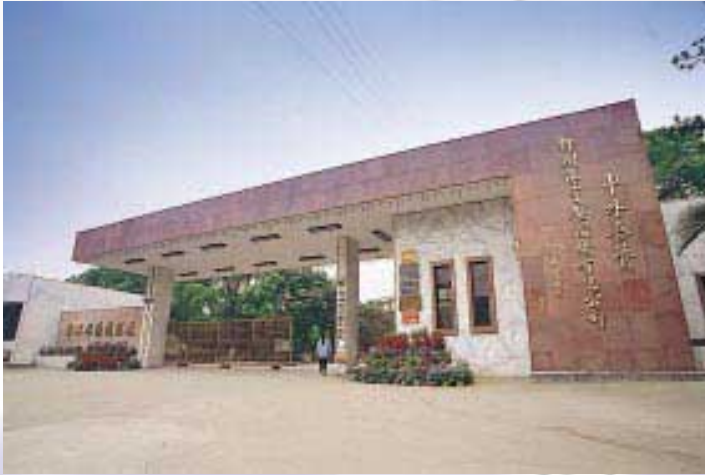
國之主要投資



New Time Plaza, Guangzhou
廣州之新時代廣場



California Gardens, Shanghai (New China Homes, Ltd)
上海錦秋加州花園



Liuzhou Universal Compressor Factory
柳州環宇壓縮機廠



Guangzhou Pegasus Boiler Factory, Guangzhou
廣州勁馬鍋爐廠



National Highway 311 (Henan Province Yong Cheng City)
國道311 (河南省永城市)

Principal Investments in Malaysia

來西亞之主要投資



Proposed Taman Teluk Bedong
Indah Development
公寓



Proposed Apartments in Segambut (Planning Stage)
公寓



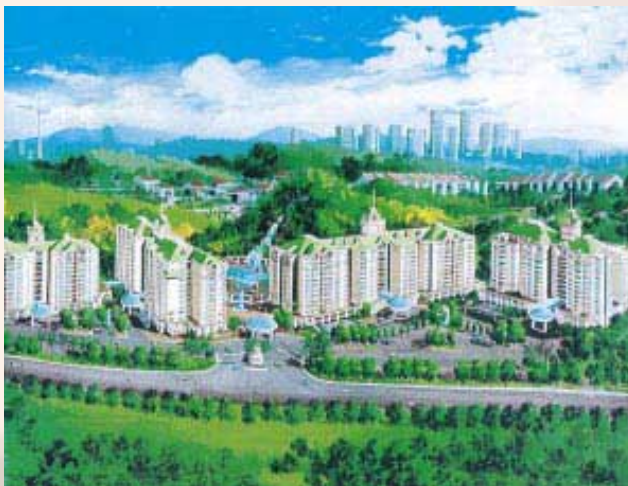
Desa Karunmas 2 1/2 Storey Terrace House
住宅



Dorsett Regency Hotel, Kuala Lumpur
吉隆坡之酒店



Sri Jati Condominium
公寓



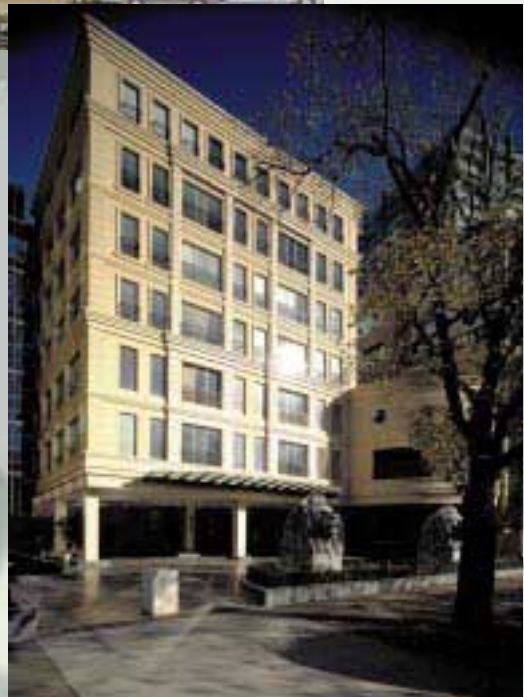
Regina Court Condominium
公寓

澳洲之主要投資

Principal Investments in Australia



360 St. Kilda Road, Melbourne
“Royal Domain Plaza Apartments”
墨爾本之公寓



370 St. Kilda Road, Melbourne
“Royal Domain Corporate”
墨爾本之寫字樓



Dolphin Arcade, Surfers Paradise
滑浪者天堂之商場



Rockman's Regency Hotel & Tower, Melbourne
墨爾本之酒店及公寓



Rockman's Regency Hotel Lobby
酒店大堂



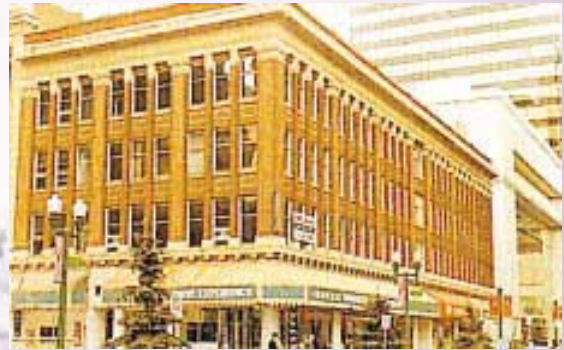
Rockman's Regency Tower Apartment Interior
公寓之室內設計

Principal Investment in North America

美州之主要投資



Dallas Grand Hotel, Dallas, Texas, U.S.A.
美國德薩斯市之達拉斯大酒店



Kelly Ramsey Building, Edmonton, Canada
加拿大愛民頓市之商業大廈



Cambridge Building, Edmonton, Canada
加拿大愛民頓市之商業大廈



Residential Development Project at Riverside South
Manhattan, New York, U.S.A.
美國紐約曼克頓區之住宅發展項目

